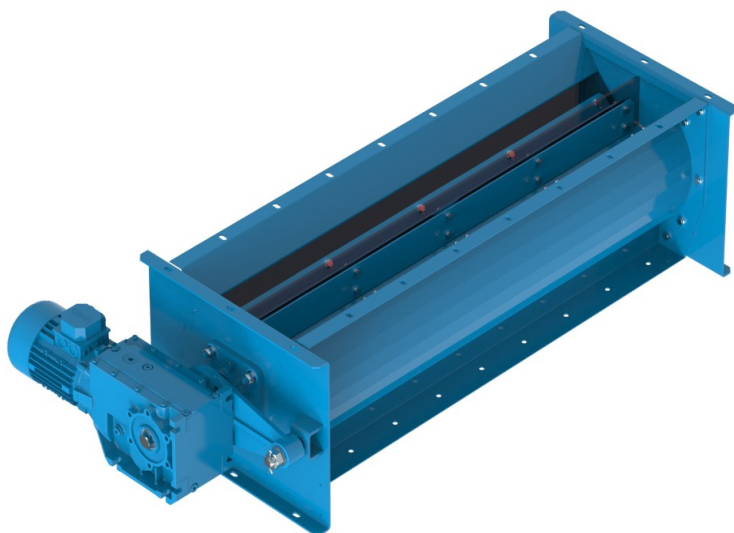


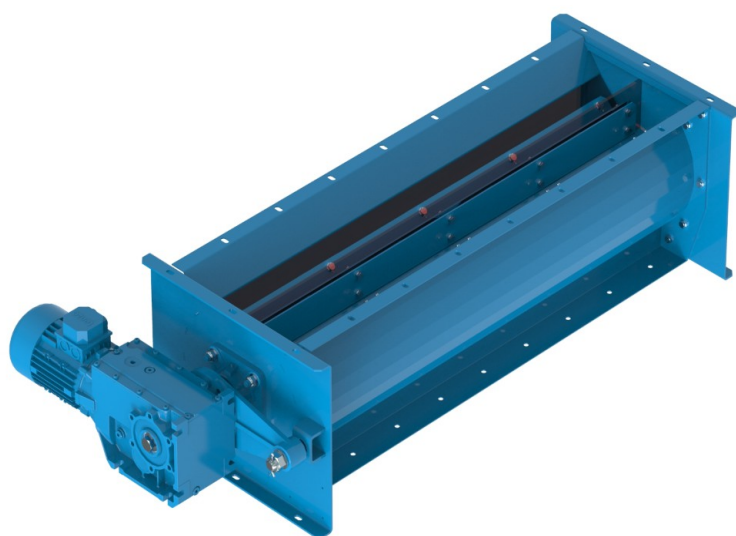
Price list – Chamber locks



- Chamber locks are fitted with an 8-lobe rotor with blades made of s=4.0 mm S235 sheet;
- Sealing of the connection between the rotor and the housing is ensured by sealing tape;
- Also featuring speed control
- Standard colour used for the chamber locks is RAL 5015.

Product no. of the chamber lock	Product name	Capacity [m ³ /h]
380400402	Lock 400 x 400	47.6
380500502	Lock 500 x 500	132.4
380600502	Lock 600x500	155
380750302	Lock 750 x 300	23.3
381070302	Lock 1070 x 300	32.6
381500302	Lock 1500 x 300	46.6
381180662	Lock 1180x665	37.5

Price list – Chamber locks



- Chamber locks are fitted with an 8-lobe rotor with blades made of s=4.0 mm S235 sheet;
- Sealing of the connection between the rotor and the housing is ensured by sealing tape;
- Also featuring speed control
- Standard colour used for the chamber locks is RAL 5015.

382140662	Lock 2140 x 665	68.0
382320662	Lock 2320 x 665	73.7
Product no. of the chamber lock	Product name	Capacity [m ³ /h]
382360662	Lock 2360 x 665	75.0

The listed lock capacity assumes 100% loading.

The chamber locks listed above meet the following standards: PN-EN ISO 12100 2012-11; PN-EN ISO 13857 2010-01; PN-EN 349+A1 2010-11; PN-EN 60204-1 2010-01

We can also manufacture locks on request.